

Системы крепления

Технические характеристики

По вопросам продаж и поддержки обращайтесь:

Алматы (727)345-47-04
Ангарск (3955)60-70-56
Архангельск (8182)63-90-72
Астрахань (8512)99-46-04
Барнаул (3852)73-04-60
Белгород (4722)40-23-64
Благовещенск (4162)22-76-07
Брянск (4832)59-03-52
Владивосток (423)249-28-31
Владикавказ (8672)28-90-48
Владимир (4922)49-43-18
Волгоград (844)278-03-48
Вологда (8172)26-41-59
Воронеж (473)204-51-73
Екатеринбург (343)384-55-89

Иваново (4932)77-34-06
Ижевск (3412)26-03-58
Иркутск (395)279-98-46
Казань (843)206-01-48
Калининград (4012)72-03-81
Калуга (4842)92-23-67
Кемерово (3842)65-04-62
Киров (8332)68-02-04
Коломна (4966)23-41-49
Кострома (4942)77-07-48
Краснодар (861)203-40-90
Красноярск (391)204-63-61
Курск (4712)77-13-04
Курган (3522)50-90-47
Липецк (4742)52-20-81

Магнитогорск (3519)55-03-13
Москва (495)268-04-70
Мурманск (8152)59-64-93
Набережные Челны (8552)20-53-41
Нижний Новгород (831)429-08-12
Новокузнецк (3843)20-46-81
Ноябрьск (3496)41-32-12
Новосибирск (383)227-86-73
Омск (3812)21-46-40
Орел (4862)44-53-42
Оренбург (3532)37-68-04
Пенза (8412)22-31-16
Петрозаводск (8142)55-98-37
Псков (8112)59-10-37
Пермь (342)205-81-47

Ростов-на-Дону (863)308-18-15
Рязань (4912)46-61-64
Самара (846)206-03-16
Санкт-Петербург (812)309-46-40
Саратов (845)249-38-78
Севастополь (8692)22-31-93
Саранск (8342)22-96-24
Симферополь (3652)67-13-56
Смоленск (4812)29-41-54
Сочи (862)225-72-31
Ставрополь (8652)20-65-13
Сургут (3462)77-98-35
Сыктывкар (8212)25-95-17
Тамбов (4752)50-40-97
Тверь (4822)63-31-35

Тольятти (8482)63-91-07
Томск (3822)98-41-53
Тула (4872)33-79-87
Тюмень (3452)66-21-18
Ульяновск (8422)24-23-59
Улан-Удэ (3012)59-97-51
Уфа (347)229-48-12
Хабаровск (4212)92-98-04
Чебоксары (8352)28-53-07
Челябинск (351)202-03-61
Череповец (8202)49-02-64
Чита (3022)38-34-83
Якутск (4112)23-90-97
Ярославль (4852)69-52-93

Россия +7(495)268-04-70

Казахстан +(727)345-47-04

Беларусь +(375)257-127-884

Узбекистан +998(71)205-18-59

Киргизия +996(312)96-26-47

эл.почта: ezu@nt-rt.ru || сайт: <https://leuze.nt-rt.ru/>



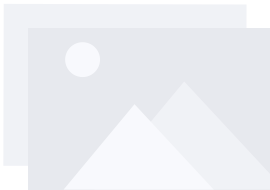
BTA 0100 M.5

Mounting device

Type of fastening, at device: Screw type

Type of fastening, at system: Through-hole mounting

Mounting device material: Stainless steel



BT-2T-E100

Mounting bracket set

Type of fastening, at device: Clampable

Type of fastening, at system: Through-hole mounting

Mounting device material: Plastic, Metal



BT-3L-E100

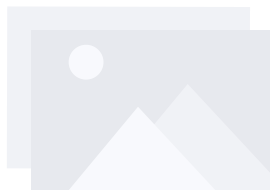
Mounting bracket set

Design of mounting device: Angle, L-shape

Type of fastening, at device: Screw type

Type of fastening, at system: Through-hole mounting

Mounting device material: Metal



BT-2L-E100

Mounting bracket set

Design of mounting device: Angle, L-shape

Type of fastening, at device: Screw type

Type of fastening, at system: Through-hole mounting

Mounting device material: Metal



BTU0700P

Mounting system

Design of mounting device: Angle, U-shape

Type of fastening, at device: Screw type

Type of fastening, at system: Through-hole mounting

Mounting device material: Plastic



BTK IVS 1048

Mounting device

Type of fastening, at device: Spherical head

Type of fastening, at system: Screw type

Mounting device material: Aluminum



BTC 0310M-DT

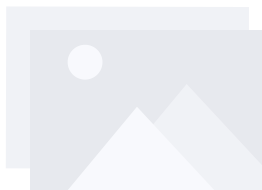
Mounting device

Design of mounting device: Mounting clamp

Type of fastening, at device: Screw type

Type of fastening, at system: Clampable

Mounting device material: Metal



BT 346M.5-90

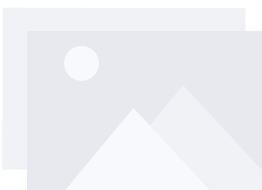
Mounting device

Design of mounting device: Bracket mounting

Type of fastening, at device: Screw type

Type of fastening, at system: Through-hole mounting

Mounting device material: Metal



BT 346M.5-180

Mounting device

Design of mounting device: Mounting plate

Type of fastening, at device: Screw type

Type of fastening, at system: Through-hole mounting

Mounting device material: Metal



BTK IL SP 021

Mounting device

Type of fastening, at device: Spherical head

Type of fastening, at system: Screw type

Mounting device material: Aluminum



BT-VM

Mounting device

Design of mounting device: Swivel mount
Type of fastening, at device: Clampable, On the lateral C-groove
Type of fastening, at system: Through-hole mounting
Mounting device material: Metal



BT 716M-APCXL

Mounting device

Design of mounting device: Air wipe unit with cross-flow fan
Type of fastening, at device: Pre-mounted with mounting arms
Type of fastening, at system: Mounting arms with M8 bore hole
Mounting device material: Steel



BT 712M-APCXL

Mounting device

Design of mounting device: Air wipe unit with cross-flow fan
Type of fastening, at device: Pre-mounted with mounting arms
Type of fastening, at system: Mounting arms with M8 bore hole
Mounting device material: Steel



BT 709M-APCXL

Mounting device

Design of mounting device: Air wipe unit with cross-flow fan
Type of fastening, at device: Pre-mounted with mounting arms
Type of fastening, at system: Mounting arms with M8 bore hole
Mounting device material: Steel



BT 708M-APCXL

Mounting device

Design of mounting device: Air wipe unit with cross-flow fan

Type of fastening, at device: Pre-mounted with mounting arms

Type of fastening, at system: Mounting arms with M8 bore hole

Mounting device material: Steel



BT 706M-APCXL

Mounting device

Design of mounting device: Air wipe unit with cross-flow fan

Type of fastening, at device: Pre-mounted with mounting arms

Type of fastening, at system: Mounting arms with M8 bore hole

Mounting device material: Steel



BTU 0110M-D12

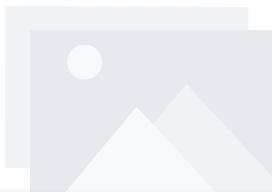
Mounting device

Design of mounting device: Mounting system

Type of fastening, at device: Screw type

Type of fastening, at system: For 12 mm rod

Mounting device material: Metal



BT-GS6X.E

Mounting device

Design of mounting device: Mounting plate

Type of fastening, at device: Screw type

Type of fastening, at system: Through-hole mounting

Mounting device material: Metal



BTU 053M.5F-D12-T

Mounting system

Design of mounting device: Mounting system

Type of fastening, at device: For 12 mm rod

Type of fastening, at system: Screw type

Mounting device material: Stainless steel



BT 25B.1 - 10SET

Mounting strap set

Design of mounting device: Retaining clip
Type of fastening, at device: Screw type
Type of fastening, at system: Through-hole mounting
Mounting device material: Metal



BT 0100M-F

Mounting device

Design of mounting device: Angle, L-shape
Type of fastening, at device: Screw type, Threaded holes
Type of fastening, at system: Through-hole mounting
Mounting device material: Metal



BT 0100M

Mounting device

Design of mounting device: Mounting plate
Type of fastening, at device: Screw type
Type of fastening, at system: Groove mounting, Through-hole mounting
Mounting device material: Metal



BTK IL BA 023

Mounting device

Type of fastening, at device: Spherical head
Type of fastening, at system: Screw type
Mounting device material: Aluminum



BTK IL BA 012

Mounting device

Type of fastening, at device: Spherical head
Type of fastening, at system: Screw type
Mounting device material: Aluminum

BT 716M-APSET

Mounting device

Design of mounting device: Air wipe unit with cross-flow fan

Type of fastening, at device: Pre-mounted with mounting arms

Type of fastening, at system: Mounting arms with M8 bore hole

Mounting device material: Steel

BT 712M-APSET

Mounting device

Design of mounting device: Air wipe unit with cross-flow fan

Type of fastening, at device: Pre-mounted with mounting arms

Type of fastening, at system: Mounting arms with M8 bore hole

Mounting device material: Steel

BT 709M-APSET

Mounting device

Design of mounting device: Air wipe unit with cross-flow fan

Type of fastening, at device: Pre-mounted with mounting arms

Type of fastening, at system: Mounting arms with M8 bore hole

Mounting device material: Steel

BT 708M-APSET

Mounting device

Design of mounting device: Air wipe unit with cross-flow fan

Type of fastening, at device: Pre-mounted with mounting arms

Type of fastening, at system: Mounting arms with M8 bore hole

Mounting device material: Steel

BT 706M-APSET

Mounting device

Design of mounting device: Air wipe unit with cross-flow fan

Type of fastening, at device: Pre-mounted with mounting arms

Type of fastening, at system: Mounting arms with M8 bore hole

Mounting device material: Steel



BTA 0100M

Mounting device

Type of fastening, at device: Screw type

Type of fastening, at system: Through-hole mounting

Mounting device material: Aluminum, Steel



BTU 330M-1

Mounting device

Design of mounting device: Mounting system

Type of fastening, at device: Screw type

Type of fastening, at system: For 10-16 mm rods

Mounting device material: Metal



BT 330M

Mounting bracket

Design of mounting device: Angle, L-shape

Type of fastening, at device: Screw type

Type of fastening, at system: Through-hole mounting

Mounting device material: Metal



BTX 046M

Mounting plate

Design of mounting device: Mounting plate

Type of fastening, at device: Screw type

Type of fastening, at system: Through-hole mounting

Mounting device material: Metal



BT 70EM-MRSET

Mounting device set

Design of mounting device: Profile kit

Type of fastening, at device: Groove mounting

Type of fastening, at system: Screw type / vertical

Mounting device material: Aluminum

BT 708M-MRSET

Mounting device set

Design of mounting device: Profile kit

Type of fastening, at device: Groove mounting

Type of fastening, at system: Screw type / vertical

Mounting device material: Aluminum

BT 710M-MRSET

Mounting device set

Design of mounting device: Profile kit

Type of fastening, at device: Groove mounting

Type of fastening, at system: Screw type / vertical

Mounting device material: Aluminum



IT 19x1i-End Cap

End cap

Type of fastening, at device: to engage



BTU D12M-L-140

Rod

Design of mounting device: Rod

Type of fastening, at device: Clampable

Type of fastening, at system: Clampable

Mounting device material: Metal



BTU 934M-VKT+L-90

Reflector

Design of mounting device: Mounting system

Type of fastening, at device: Pre-mounted reflector

Type of fastening, at system: Square rod 10 mm, For 9-12 mm rods, Sheet metal mo...

Mounting device material: Metal



BTU 935M-D12

Reflector

Design of mounting device: Mounting system

Type of fastening, at device: Pre-mounted reflector

Type of fastening, at system: For 12 mm rod, Sheet-metal mounting

Mounting device material: Metal



BTU 305M-D12

Mounting system

Design of mounting device: Mounting system

Type of fastening, at device: Screw type, Suited for M3 screws, Suited for M4 sc...

Type of fastening, at system: For 12 mm rod, Sheet-metal mounting

Mounting device material: Metal



BTX 025M-W23

Mounting plate

Design of mounting device: Mounting plate

Type of fastening, at device: Screw type, Suited for M3 screws, Suited for M4 sc...

Type of fastening, at system: Through-hole mounting, Suited for M5 screws



BTX 025M-W14

Mounting plate

Design of mounting device: Mounting plate

Type of fastening, at device: Screw type, Suited for M3 screws

Type of fastening, at system: Through-hole mounting, Suited for M4 screws



BT 700M.5-2SET

Mounting device set

Design of mounting device: Bracket mounting

Type of fastening, at device: Screw type,
Sliding block

Type of fastening, at system: Through-hole
mounting, T slotted hole

Mounting device material: Steel



BTU D12M-L-200

Rod

Design of mounting device: Rod

Type of fastening, at device: Clampable

Type of fastening, at system: Clampable

Mounting device material: Metal



BTU 300M-D12-90

Rod mounting

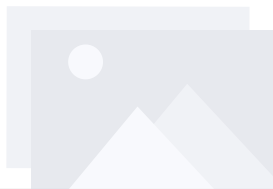
Design of mounting device: Mounting system

Type of fastening, at device: Screw type,

Suited for M4 screws

Type of fastening, at system: For 12 mm rod,
Sheet-metal mounting

Mounting device material: Metal



BT 712M-MRSET

Mounting device set

Design of mounting device: Profile kit

Type of fastening, at device: Groove
mounting

Type of fastening, at system: Screw type /
vertical

Mounting device material: Aluminum



BT 205M

Mounting device

Type of fastening, at device: Screw type

Type of fastening, at system: Through-hole
mounting

Mounting device material: Metal



AC MA200-KB

Fastening

Design of mounting device: Cable routing
Type of fastening, at device: Screw type
Type of fastening, at system: Screw type
Mounting device material: Metal, Plastic



MC 005K

Clamp

Design of mounting device: Mounting clamp
Type of fastening, at device: Clampable
Type of fastening, at system: Through-hole mounting
Mounting device material: Plastic



MC 004K

Clamp

Design of mounting device: Mounting clamp
Type of fastening, at device: Clampable
Type of fastening, at system: Through-hole mounting
Mounting device material: Plastic



MC 003K

Clamp

Design of mounting device: Mounting clamp
Type of fastening, at device: Clampable
Type of fastening, at system: Through-hole mounting
Mounting device material: Plastic



BTX 018M

Mounting plate

Design of mounting device: Mounting plate
Type of fastening, at device: Screw type
Type of fastening, at system: Through-hole mounting
Mounting device material: Metal



BTU 360-D30

Rod mounting

Design of mounting device: Mounting system
Type of fastening, at device: Screw type
Type of fastening, at system: For 30 mm rod
Mounting device material: Plastic, Metal



BTU 360-D18

Rod mounting

Design of mounting device: Mounting system
Type of fastening, at device: Screw type
Type of fastening, at system: For 18 mm rod
Mounting device material: Plastic, Metal



BTU D12M-VKT-90

Rod mounting

Design of mounting device: Mounting system
Type of fastening, at device: For 12 mm rod,
Square rod 10 mm
Type of fastening, at system: Through-hole
mounting, Bore holes 2 x Ø 5.5 mm
Mounting device material: Metal



BTU D12M-Z-230

Rod

Design of mounting device: Z-shaped rod, 12
mm
Type of fastening, at device: Clampable
Type of fastening, at system: Clampable
Mounting device material: Metal



BTU D12M.5-Z-230

Rod

Design of mounting device: Z-shaped rod, 12
mm
Type of fastening, at device: Clampable
Type of fastening, at system: Clampable
Mounting device material: Stainless steel



BTU 320M-D12-RL70

Mounting system

Design of mounting device: Mounting system
Type of fastening, at device: Screw type
Type of fastening, at system: For 12 mm rod
Mounting device material: Metal



BT 320M

Mounting bracket

Design of mounting device: Angle, L-shape
Type of fastening, at device: Screw type
Type of fastening, at system: Through-hole mounting
Mounting device material: Metal



BT 328M

Fastening

Design of mounting device: Mounting clamp
Type of fastening, at device: Screw type
Type of fastening, at system: For 18 mm rod, Through-hole mounting
Mounting device material: Stainless steel



BT 300 W

Mounting device

Design of mounting device: Angle, L-shape
Type of fastening, at device: Screw type
Type of fastening, at system: Through-hole mounting
Mounting device material: Metal



BT Wallholder HS65x8

Wall mount

Design of mounting device: Wall mounting
Type of fastening, at device: insertable
Type of fastening, at system: Through-hole mounting
Mounting device material: Plastic



BTU 320M-D12

Mounting system

Design of mounting device: Mounting system
Type of fastening, at device: Screw type
Type of fastening, at system: For 12 mm rod
Mounting device material: Metal



BT 900

Fastening

Design of mounting device: Angle, L-shape
Type of fastening, at device: Screw type
Type of fastening, at system: Through-hole mounting
Mounting device material: Metal



BT Holder HCR 6200

Support

Design of mounting device: Table foot
Type of fastening, at device: insertable
Type of fastening, at system: Self-supporting
Mounting device material: Plastic



BTU 346M.6-D12

Mounting system

Design of mounting device: Mounting system
Type of fastening, at device: Screw type
Type of fastening, at system: For 12 mm rod, Sheet-metal mounting
Mounting device material: Metal, Stainless steel



BT 1900gCover

Protection hood

Design of mounting device: Protection hood
Type of fastening, at device: insertable
Type of fastening, at system: Suspended (rope)
Mounting device material: Plastic



BT Stand 30 IT 191x

Mounting bracket

Design of mounting device: Table foot
Type of fastening, at device: insertable
Type of fastening, at system: Self-supporting
Mounting device material: Plastic



BT-GS6X.DT

Mounting device

Design of mounting device: Mounting clamp
Type of fastening, at device: Screw type
Type of fastening, at system: Groove mounting
Mounting device material: Metal



BTU 460M-D12

Mounting system

Design of mounting device: Mounting system
Type of fastening, at device: Screw type
Type of fastening, at system: For 12 mm rod
Mounting device material: Metal



BTU 460M-D10

Mounting system

Design of mounting device: Mounting system
Type of fastening, at device: Screw type
Type of fastening, at system: For 10 mm rod
Mounting device material: Metal



BTU 008M-D10

Mounting system

Design of mounting device: Mounting system
Type of fastening, at device: Screw type
Type of fastening, at system: Sheet-metal mounting, For 10 mm rod
Mounting device material: Metal



BTX 0500 M

Adapter plate

Design of mounting device: Adapter plate
Type of fastening, at device: Screw type
Type of fastening, at system: Through-hole mounting
Mounting device material: Metal



BT 56 - V

Mounting device

Design of mounting device: Mounting system
Type of fastening, at device: Clampable
Type of fastening, at system: For 16 mm rod,
 For 12 mm rod, For 14 mm rod
Mounting device material: Metal



BTX-D18M-D30

Adapter

Type of fastening, at device: Screw type
Type of fastening, at system: Mounting
 thread
Mounting device material: Stainless steel



BTU 0300M-W

Mounting device

Type of fastening, at device: Clampable,
 Groove mounting, Suited for M4 screws
Type of fastening, at system: Through-hole
 mounting
Mounting device material: Metal



BT 205M-10SET

Mounting device set

Design of mounting device: Angle, L-shape
Type of fastening, at device: Screw type
Type of fastening, at system: Through-hole
 mounting
Mounting device material: Metal



BT-GS6X.H

Mounting device

Design of mounting device: Mounting plate
Type of fastening, at device: Groove
 mounting
Type of fastening, at system: Through-hole
 mounting
Mounting device material: Metal



BTU 346M.5-D12

Mounting system

Design of mounting device: Mounting system
Type of fastening, at device: Screw type
Type of fastening, at system: For 12 mm rod, Sheet-metal mounting
Mounting device material: Stainless steel



BTU 346M-D12

Mounting system

Design of mounting device: Mounting system
Type of fastening, at device: Screw type
Type of fastening, at system: For 12 mm rod, Sheet-metal mounting
Mounting device material: Metal



BT318B-OM

Fastening

Design of mounting device: Mounting clamp
Type of fastening, at device: Screw type
Type of fastening, at system: Through-hole mounting
Mounting device material: Plastic



BT 56 - 1

Mounting device

Design of mounting device: Mounting system
Type of fastening, at device: Clampable
Type of fastening, at system: For 12 mm rod, For 14 mm rod, For 16 mm rod
Mounting device material: Metal



BT 300 - 1

Mounting device

Design of mounting device: Mounting system
Type of fastening, at device: Screw type
Type of fastening, at system: For 10-16 mm rods
Mounting device material: Metal



BTU 200M.5-D12

Mounting system

Design of mounting device: Mounting system

Type of fastening, at device: Screw type,
Suited for M3 screws

Type of fastening, at system: For 12 mm rod

Mounting device material: Stainless steel



BTU 300M.5-D12

Mounting system

Design of mounting device: Mounting system

Type of fastening, at device: Screw type,
Suited for M4 screws

Type of fastening, at system: For 12 mm rod,
Sheet-metal mounting

Mounting device material: Stainless steel



BTU 934M-D12-90

Reflector

Design of mounting device: Mounting system

Type of fastening, at device: Pre-mounted
reflector

Type of fastening, at system: For 12 mm rod,
Sheet-metal mounting

Mounting device material: Metal



BTU 934M-D10-90

Reflector

Design of mounting device: Mounting system

Type of fastening, at device: Pre-mounted
reflector

Type of fastening, at system: For 10 mm rod,
Sheet-metal mounting

Mounting device material: Metal



BTU 934M-D14-90

Reflector

Design of mounting device: Mounting system

Type of fastening, at device: Pre-mounted
reflector

Type of fastening, at system: Sheet-metal
mounting, For 14 mm rod

Mounting device material: Metal



BTU D12M-D12-A090

Mounting system

Design of mounting device: Mounting system

Type of fastening, at device: For 12 mm rod, Square rod 10 mm, Through-hole moun...

Type of fastening, at system: Through-hole mounting, For 12 mm rod, Square rod 1...

Mounting device material: Metal



BTU D12M-D12-B090

Mounting system

Design of mounting device: Mounting system

Type of fastening, at device: Clampable

Type of fastening, at system: For 12 mm rod, Through-hole mounting

Mounting device material: Metal



BTU 900M-D10

Mounting system

Design of mounting device: Mounting system

Type of fastening, at device: Screw type

Type of fastening, at system: For 10 mm rod, Sheet-metal mounting

Mounting device material: Metal



BTU 900M-D12

Mounting system

Design of mounting device: Mounting system

Type of fastening, at device: Screw type

Type of fastening, at system: For 12 mm rod, Sheet-metal mounting

Mounting device material: Metal



BTU 900M-D14

Mounting system

Design of mounting device: Mounting system

Type of fastening, at device: Screw type

Type of fastening, at system: For 14 mm rod, Sheet-metal mounting

Mounting device material: Metal



BTU D12M.5-150

Mounting system

Design of mounting device: 12 mm rod
Type of fastening, at device: Clampable
Type of fastening, at system: Clampable
Mounting device material: Stainless steel



BT 300M.5

Mounting bracket

Design of mounting device: Angle, L-shape
Type of fastening, at device: Screw type,
Suited for M4 screws
Type of fastening, at system: Through-hole
mounting
Mounting device material: Stainless steel



BT 200M.5

Mounting bracket

Design of mounting device: Angle, L-shape
Type of fastening, at device: Screw type,
Suited for M3 screws
Type of fastening, at system: Through-hole
mounting
Mounting device material: Stainless steel



BT 25-ARH

Mounting device

Design of mounting device: Mounting plate
Type of fastening, at device: Screw type
Type of fastening, at system: Through-hole
mounting
Mounting device material: Metal



BTP 200M-D10

Mounting system

Design of mounting device: Protection hood
Type of fastening, at device: Screw type
Type of fastening, at system: For 10 mm rod
Mounting device material: Metal



BTP 200M-D12

Mounting system

Design of mounting device: Protection hood
Type of fastening, at device: Screw type
Type of fastening, at system: For 12 mm rod
Mounting device material: Metal



BTP 200M-D14

Mounting system

Design of mounting device: Protection hood
Type of fastening, at device: Screw type
Type of fastening, at system: For 14 mm rod
Mounting device material: Metal



BTP 300M-D10

Mounting system

Design of mounting device: Protection hood
Type of fastening, at device: Screw type
Type of fastening, at system: For 10 mm rod
Mounting device material: Metal



BTP 300M-D12

Mounting system

Design of mounting device: Protection hood
Type of fastening, at device: Screw type
Type of fastening, at system: For 12 mm rod
Mounting device material: Metal



BTP 300M-D14

Mounting system

Design of mounting device: Protection hood
Type of fastening, at device: Screw type
Type of fastening, at system: For 14 mm rod
Mounting device material: Metal



BTU D18M-D12

Mounting system

Design of mounting device: Mounting system

Type of fastening, at device: Screw type
Type of fastening, at system: Through-hole mounting
Mounting device material: Metal



BT 318P-LS

Fastening

Design of mounting device: Mounting clamp
Type of fastening, at device: Clampable
Type of fastening, at system: Through-hole mounting
Mounting device material: Plastic



BTU D12M.5-045-M8

Mounting system

Design of mounting device: 12 mm rod
Type of fastening, at device: Clampable
Type of fastening, at system: Mounting thread
Mounting device material: Stainless steel



BTU D12M.5-250

Mounting system

Design of mounting device: 12 mm rod
Type of fastening, at device: Clampable
Type of fastening, at system: Clampable
Mounting device material: Stainless steel



BT 003M.1

Mounting device

Design of mounting device: Angle, L-shape
Type of fastening, at device: Screw type
Type of fastening, at system: Through-hole mounting
Mounting device material: Metal



BT Stand 8 IT 190x

Mounting bracket

Design of mounting device: Table foot
Type of fastening, at device: insertable
Type of fastening, at system: Self-supporting
Mounting device material: Plastic



BT D21M

Mounting bracket

Design of mounting device: Angle, L-shape

Type of fastening, at device: Screw type

Type of fastening, at system: Through-hole mounting

Mounting device material: Metal



BTU 200M-D10

Mounting system

Design of mounting device: Mounting system

Type of fastening, at device: Screw type,

Suited for M3 screws

Type of fastening, at system: For 10 mm rod, Sheet-metal mounting

Mounting device material: Metal



BTU 200M-D12

Mounting system

Design of mounting device: Mounting system

Type of fastening, at device: Screw type,

Suited for M3 screws

Type of fastening, at system: For 12 mm rod, Sheet-metal mounting

Mounting device material: Metal



BTU 200M-D14

Mounting system

Design of mounting device: Mounting system

Type of fastening, at device: Screw type,

Suited for M3 screws

Type of fastening, at system: For 14 mm rod, Sheet-metal mounting

Mounting device material: Metal



BTU 300M-D10

Mounting system

Design of mounting device: Mounting system

Type of fastening, at device: Screw type,

Suited for M4 screws

Type of fastening, at system: For 10 mm rod, Sheet-metal mounting

Mounting device material: Metal



BTU 300M-D12

Mounting system

Design of mounting device: Mounting system

Type of fastening, at device: Screw type,
Suited for M4 screws

Type of fastening, at system: For 12 mm rod,
Sheet-metal mounting

Mounting device material: Metal



BTU 300M-D14

Mounting system

Design of mounting device: Mounting system

Type of fastening, at device: Screw type,
Suited for M4 screws

Type of fastening, at system: For 14 mm rod,
Sheet-metal mounting

Mounting device material: Metal



BT Wallholder IT190x

Wall mount

Design of mounting device: Wall mounting

Type of fastening, at device: insertable

Type of fastening, at system: Mounting
thread

Mounting device material: Plastic



BTC 088M-I40

Mounting device

Design of mounting device: Mounting clamp

Type of fastening, at device: Clampable

Type of fastening, at system: Groove
mounting

Mounting device material: Metal



BT Desktop IT1300g

Support

Design of mounting device: Table foot

Type of fastening, at device: insertable

Type of fastening, at system: Self-supporting

Mounting device material: Plastic



BT Holder IT 190x

Mounting bracket

Design of mounting device: Table foot
Type of fastening, at device: insertable
Type of fastening, at system: Self-supporting
Mounting device material: Plastic



BT-GS6X.L1

Mounting device

Design of mounting device: Mounting plate
Type of fastening, at device: Screw type, Groove mounting
Type of fastening, at system: Through-hole mounting, Screw type
Mounting device material: Metal



BT D08M.5

Mounting bracket

Design of mounting device: Angle, L-shape
Type of fastening, at device: Screw type
Type of fastening, at system: Through-hole mounting
Mounting device material: Stainless steel



BT D12M.5

Mounting bracket

Design of mounting device: Angle, L-shape
Type of fastening, at device: Screw type
Type of fastening, at system: Through-hole mounting
Mounting device material: Stainless steel



BT D18M.5

Mounting bracket

Design of mounting device: Angle, L-shape
Type of fastening, at device: Screw type
Type of fastening, at system: Through-hole mounting
Mounting device material: Stainless steel



BT D30M.5

Mounting bracket

Design of mounting device: Angle, L-shape
Type of fastening, at device: Screw type
Type of fastening, at system: Through-hole mounting
Mounting device material: Stainless steel



BT-GS6X.L

Mounting device

Design of mounting device: Mounting plate
Type of fastening, at device: Groove mounting, Screw type
Type of fastening, at system: Through-hole mounting, Screw type
Mounting device material: Metal



BT 002M.5

Mounting device

Design of mounting device: Angle, L-shape
Type of fastening, at device: Screw type
Type of fastening, at system: Through-hole mounting
Mounting device material: Stainless steel



BT 3.5

Mounting device

Design of mounting device: Retaining clip
Type of fastening, at device: Screw type
Type of fastening, at system: Through-hole mounting
Mounting device material: Metal



MC 030K-LS

Clamp

Design of mounting device: Mounting clamp
Type of fastening, at device: Clampable with limit stop
Type of fastening, at system: Through-hole mounting
Mounting device material: Plastic



MC 030K

Clamp

Design of mounting device: Mounting clamp

Type of fastening, at device: Clampable

Type of fastening, at system: Through-hole mounting

Mounting device material: Plastic



MC 018K-LS

Clamp

Design of mounting device: Mounting clamp

Type of fastening, at device: Clampable with limit stop

Type of fastening, at system: Through-hole mounting

Mounting device material: Plastic



MW OMS/AMS 01

Mounting bracket

Design of mounting device: Angle, L-shape

Type of fastening, at device: Screw type

Type of fastening, at system: Through-hole mounting

Mounting device material: Metal



BT Flex Neck IT1300g

Mounting bracket

Design of mounting device: Table foot

Type of fastening, at device: insertable

Type of fastening, at system: Self-supporting

Mounting device material: Plastic



BT 96.1

Mounting device

Design of mounting device: Angle, L-shape

Type of fastening, at device: Screw type

Type of fastening, at system: Through-hole mounting

Mounting device material: Metal



MC 018K

Clamp

Design of mounting device: Mounting clamp

Type of fastening, at device: Clampable

Type of fastening, at system: Through-hole mounting

Mounting device material: Plastic



MC 012K-LS

Clamp

Design of mounting device: Mounting clamp

Type of fastening, at device: Clampable with limit stop

Type of fastening, at system: Through-hole mounting

Mounting device material: Plastic



MC 012K

Clamp

Design of mounting device: Mounting clamp

Type of fastening, at device: Clampable

Type of fastening, at system: Through-hole mounting

Mounting device material: Plastic



MC 008K-LS

Clamp

Design of mounting device: Mounting clamp

Type of fastening, at device: Clampable with limit stop

Type of fastening, at system: Through-hole mounting

Mounting device material: Plastic



MC 008K

Clamp

Design of mounting device: Mounting clamp

Type of fastening, at device: Clampable

Type of fastening, at system: Through-hole mounting

Mounting device material: Plastic



MC 006K

Clamp

Design of mounting device: Mounting clamp

Type of fastening, at device: Clampable

Type of fastening, at system: Through-hole mounting

Mounting device material: Plastic



BT 20-D10

Mounting device

Design of mounting device: Mounting system

Type of fastening, at device: Screw type

Type of fastening, at system: For 10 mm rod, Sheet-metal mounting

Mounting device material: Metal



BT 59

Mounting bracket

Type of fastening, at device: Clampable

Type of fastening, at system: Groove mounting

Mounting device material: Metal



BT-GS6X

Mounting device

Design of mounting device: Mounting plate

Type of fastening, at device: Screw type

Type of fastening, at system: Through-hole mounting

Mounting device material: Metal



BT Cover IT1300g

Protection hood

Design of mounting device: Protection hood

Type of fastening, at device: insertable

Type of fastening, at system: Suspended (rope)

Mounting device material: Plastic



BT Rope IT

Rope mounting bracket

Type of fastening, at device: insertable
Type of fastening, at system: Suspended (rope)
Mounting device material: Plastic



BT VMHolder

Mounting bracket

Design of mounting device: Wall mounting
Type of fastening, at device: insertable
Type of fastening, at system: Mounting thread
Mounting device material: Metal



BT 3.1

Mounting strap set

Design of mounting device: Retaining clip
Type of fastening, at device: Screw type
Type of fastening, at system: Through-hole mounting
Mounting device material: Metal



BT 3B

Mounting device

Design of mounting device: Angle, L-shape
Type of fastening, at device: Screw type
Type of fastening, at system: Through-hole mounting
Mounting device material: Metal



BT 46

Mounting device

Design of mounting device: Angle, L-shape
Type of fastening, at device: Screw type
Type of fastening, at system: Through-hole mounting
Mounting device material: Metal



BT 450.3-96

Mounting device

Design of mounting device: Mounting system
Type of fastening, at device: Screw type
Type of fastening, at system: For 12 mm rod
Mounting device material: Metal



BT 8-01

Mounting device

Type of fastening, at device: Screw type
Type of fastening, at system: Through-hole mounting
Mounting device material: Metal



BT 3.2

Adapter plate

Design of mounting device: Mounting plate
Type of fastening, at device: Screw type
Type of fastening, at system: Mounting thread
Mounting device material: Metal



BT 318-ARH

Adjustment fastening part

Design of mounting device: Mounting plate
Type of fastening, at device: Screw type
Type of fastening, at system: Through-hole mounting
Mounting device material: Metal



BT 450.1-96

Mounting device

Design of mounting device: Mounting system
Type of fastening, at device: Screw type
Type of fastening, at system: For 10 mm rod
Mounting device material: Metal



BT 64

Mounting device

Design of mounting device: Angle, L-shape

Type of fastening, at device: Screw type

Type of fastening, at system: Through-hole mounting

Mounting device material: Metal



BT 3

Mounting device

Design of mounting device: Angle, L-shape

Type of fastening, at device: Screw type

Type of fastening, at system: Through-hole mounting

Mounting device material: Metal



BT 20-D12

Mounting device

Design of mounting device: Mounting system

Type of fastening, at device: Screw type

Type of fastening, at system: For 12 mm rod, Sheet-metal mounting

Mounting device material: Metal



BT 25

Mounting device

Design of mounting device: Angle, L-shape

Type of fastening, at device: Screw type

Type of fastening, at system: Through-hole mounting

Mounting device material: Metal



BT 21

Mounting device

Type of fastening, at device: insertable

Type of fastening, at system: Mounting thread

Mounting device material: Metal



BT 8-0

Mounting device

Design of mounting device: Mounting clamp
Type of fastening, at device: Clampable
Type of fastening, at system: Mounting thread
Mounting device material: Metal



BT 8

Mounting device

Design of mounting device: Angle, L-shape
Type of fastening, at device: Screw type
Type of fastening, at system: Through-hole mounting
Mounting device material: Metal



BT 8-ARH

Alignment aid

Design of mounting device: Mounting plate
Type of fastening, at device: Screw type
Type of fastening, at system: Through-hole mounting
Mounting device material: Metal



BT 96.4

Mounting device

Design of mounting device: Angle, L-shape
Type of fastening, at device: Screw type
Type of fastening, at system: Through-hole mounting
Mounting device material: Metal



BT 56

Mounting device

Design of mounting device: Mounting system
Type of fastening, at device: Clampable
Type of fastening, at system: For 16 mm rod, For 18 mm rod, For 20 mm rod
Mounting device material: Metal



UMS 96-82

Mounting system

Design of mounting device: Mounting system
Type of fastening, at device: Clampable
Type of fastening, at system: For 10 mm rod, For 12 mm rod, For 14 mm rod, For 1...
Mounting device material: Metal



UMS 96

Mounting system

Design of mounting device: Mounting system
Type of fastening, at device: Clampable
Type of fastening, at system: For 10 mm rod, For 12 mm rod, For 14 mm rod, For 1...
Mounting device material: Metal



UMS 96-95

Mounting system

Design of mounting device: Mounting system
Type of fastening, at device: Clampable
Type of fastening, at system: For 10 mm rod, For 12 mm rod, For 14 mm rod, For 1...
Mounting device material: Metal



BT-SET-240CC

Mounting bracket set

Type of fastening, at device: Clampable
Type of fastening, at system: Through-hole mounting
Mounting device material: Metal



BT-SET-240BC

Mounting bracket set

Type of fastening, at device: Clampable
Type of fastening, at system: Through-hole mounting
Mounting device material: Metal



BT 96

Mounting device

Design of mounting device: Angle, L-shape

Type of fastening, at device: Screw type

Type of fastening, at system: Through-hole mounting

Mounting device material: Metal



BT 95

Mounting device

Design of mounting device: Angle, L-shape

Type of fastening, at device: Screw type

Type of fastening, at system: Through-hole mounting

Mounting device material: Metal



BT 92

Mounting device

Design of mounting device: Angle, L-shape

Type of fastening, at device: Screw type

Type of fastening, at system: Through-hole mounting

Mounting device material: Metal



BT 24

Mounting device

Design of mounting device: Angle, L-shape

Type of fastening, at device: Screw type

Type of fastening, at system: Through-hole mounting

Mounting device material: Metal



BT 910M

Mounting bracket

Design of mounting device: Angle, L-shape

Type of fastening, at device: Screw type

Type of fastening, at system: Through-hole mounting

Mounting device material: Metal



BT 16

Mounting device

Design of mounting device: Angle, L-shape

Type of fastening, at device: Screw type

Type of fastening, at system: Through-hole mounting

Mounting device material: Metal



BT 85

Mounting device

Design of mounting device: Angle, L-shape

Type of fastening, at device: Screw type

Type of fastening, at system: Through-hole mounting

Mounting device material: Metal



BT 78

Mounting device

Design of mounting device: Angle, L-shape

Type of fastening, at device: Screw type

Type of fastening, at system: Through-hole mounting

Mounting device material: Metal



BT-SET-240CCS

Mounting bracket set

Type of fastening, at device: Clampable

Type of fastening, at system: Through-hole mounting

Mounting device material: Metal



BT-SET-240BCS

Mounting bracket set

Type of fastening, at device: Clampable

Type of fastening, at system: Through-hole mounting

Mounting device material: Metal



BT-2S

Mounting bracket set

Type of fastening, at device: Screw type

Type of fastening, at system: Through-hole mounting

Mounting device material: Metal



BT-SET-240CCS-E

Mounting bracket set

Type of fastening, at device: Clampable

Type of fastening, at system: Through-hole mounting

Mounting device material: Metal, Plastic



BT-SET-240BCS-E

Mounting bracket set

Type of fastening, at device: Clampable

Type of fastening, at system: Through-hole mounting

Mounting device material: Metal, Plastic



BT-SET-240CC-E

Mounting bracket set

Type of fastening, at device: Clampable

Type of fastening, at system: Through-hole mounting

Mounting device material: Metal, Plastic



BT-SET-240BC-E

Mounting bracket set

Type of fastening, at device: Clampable

Type of fastening, at system: Through-hole mounting

Mounting device material: Metal, Plastic



BT-LA-78M-UDC

Mounting bracket

Design of mounting device: Angle, L-shape
Type of fastening, at device: Screw type
Mounting device material: Metal



BT-LA-78M

Mounting bracket

Design of mounting device: Angle, L-shape
Type of fastening, at device: Screw type
Type of fastening, at system: Groove mounting
Mounting device material: Metal



MMS-AP-N60

Mounting bracket

Design of mounting device: Mounting system
Type of fastening, at device: Groove mounting
Type of fastening, at system: Through-hole mounting
Mounting device material: Metal



MMS-A-2N55

Mounting bracket set

Design of mounting device: Mounting system
Type of fastening, at device: Groove mounting
Type of fastening, at system: Through-hole mounting
Mounting device material: Metal



BT-2UM60

Mounting bracket

Type of fastening, at device: Screw type
Type of fastening, at system: Through-hole mounting
Mounting device material: Metal



BT-2HF-S

Mounting bracket set

Type of fastening, at device: Clampable

Type of fastening, at system: Through-hole mounting

Mounting device material: Metal, Plastic



BT-2HF

Mounting bracket set

Type of fastening, at device: Clampable

Type of fastening, at system: Through-hole mounting

Mounting device material: Metal, Plastic



BT-2Z

Mounting bracket set

Design of mounting device: Angle, Z-shape

Type of fastening, at device: Screw type

Type of fastening, at system: Through-hole mounting

Mounting device material: Metal



BT-2L

Mounting bracket set

Design of mounting device: Angle, L-shape

Type of fastening, at device: Screw type

Type of fastening, at system: Through-hole mounting

Mounting device material: Metal



BT-360-SET

Mounting bracket set

Type of fastening, at device: Clampable

Type of fastening, at system: Through-hole mounting

Mounting device material: Plastic



BT-2R1

Mounting bracket set

Type of fastening, at device: Clampable

Type of fastening, at system: Through-hole mounting

Mounting device material: Metal, Plastic



BT-2RG

Mounting bracket set

Type of fastening, at device: Clampable

Type of fastening, at system: Through-hole mounting

Mounting device material: Metal, Plastic



BT-MSI-MD-FB-L

Support

Design of mounting device: Angle, L-shape

Type of fastening, at device: Screw type

Type of fastening, at system: Through-hole mounting, Groove mounting

Mounting device material: Metal



BT-MSI-MD-FB

Support

Design of mounting device: Mounting plate

Type of fastening, at device: Screw type

Type of fastening, at system: Through-hole mounting, Groove mounting

Mounting device material: Metal



BT-AC-ALM

Support



BT-10NC65

Sliding block set

Design of mounting device: Sliding block
Type of fastening, at device: Groove mounting
Type of fastening, at system: Mounting thread
Mounting device material: Metal



BT-10NC64

Sliding block set

Design of mounting device: Sliding block
Type of fastening, at device: Groove mounting
Type of fastening, at system: Mounting thread
Mounting device material: Metal



BT-2HF-GS

Mounting bracket set

Type of fastening, at device: Clampable
Type of fastening, at system: Through-hole mounting
Mounting device material: Metal, Plastic



BT-2HF-G

Mounting bracket set

Type of fastening, at device: Clampable
Type of fastening, at system: Through-hole mounting
Mounting device material: Metal, Plastic



BT-2SB10-S

Mounting bracket set

Design of mounting device: Mounting clamp
Type of fastening, at device: Clampable, On the lateral C-groove
Type of fastening, at system: Through-hole mounting
Mounting device material: Metal



BT-10NC60

Sliding block set

Design of mounting device: Sliding block

Type of fastening, at device: Groove mounting

Type of fastening, at system: Mounting thread

Mounting device material: Metal



BTU D12M.5-100

Mounting system

Design of mounting device: 12 mm rod

Type of fastening, at device: Clampable

Type of fastening, at system: Clampable

Mounting device material: Stainless steel



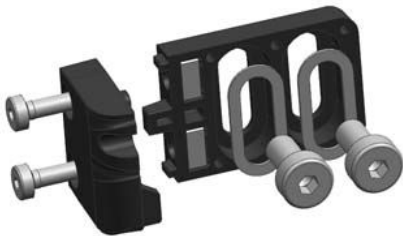
BT-MLC-S-O

Mounting device

Type of fastening, at device: Pluggable

Type of fastening, at system: Screw type

Mounting device material: Plastic



BT-MLC-S-L

Mounting device

Type of fastening, at device: Clampable

Type of fastening, at system: Screw type

Mounting device material: Plastic



BT-MLC-S-C

Mounting device

Type of fastening, at device: Clampable

Type of fastening, at system: Screw type

Mounting device material: Plastic



BT-2P45

Mounting bracket

Design of mounting device: Mounting clamp
Type of fastening, at device: Groove mounting
Type of fastening, at system: Groove mounting
Mounting device material: Metal



BT-P45

Mounting bracket

Design of mounting device: Mounting clamp
Type of fastening, at device: Groove mounting
Type of fastening, at system: Groove mounting
Mounting device material: Metal



BT-2SB05-S

Mounting bracket set

Design of mounting device: Mounting clamp
Type of fastening, at device: On the lateral C-groove, Clampable
Type of fastening, at system: Through-hole mounting
Mounting device material: Metal



BT-2SB05

Mounting bracket set

Design of mounting device: Mounting clamp
Type of fastening, at device: Clampable, On the lateral C-groove
Type of fastening, at system: Through-hole mounting
Mounting device material: Metal



BT-SB05

Mounting bracket set

Design of mounting device: Mounting clamp
Type of fastening, at device: Clampable
Type of fastening, at system: Through-hole mounting
Mounting device material: Metal



BT-SB10

Mounting bracket set

Design of mounting device: Mounting clamp

Type of fastening, at device: Clampable

Type of fastening, at system: Through-hole mounting

Mounting device material: Metal



BT-2P40

Mounting bracket set

Design of mounting device: Mounting clamp

Type of fastening, at device: Groove mounting

Type of fastening, at system: Groove mounting

Mounting device material: Metal



BT-2SB10

Mounting bracket set

Design of mounting device: Mounting clamp

Type of fastening, at device: Clampable, On the lateral C-groove

Type of fastening, at system: Through-hole mounting

Mounting device material: Metal

По вопросам продаж и поддержки обращайтесь:

Алматы (727)345-47-04
Ангарск (3955)60-70-56
Архангельск (8182)63-90-72
Астрахань (8512)99-46-04
Барнаул (3852)73-04-60
Белгород (4722)40-23-64
Благовещенск (4162)22-76-07
Брянск (4832)59-03-52
Владивосток (423)249-28-31
Владикавказ (8672)28-90-48
Владимир (4922)49-43-18
Волгоград (844)278-03-48
Вологда (8172)26-41-59
Воронеж (473)204-51-73
Екатеринбург (343)384-55-89

Иваново (4932)77-34-06
Ижевск (3412)26-03-58
Иркутск (395)279-98-46
Казань (843)206-01-48
Калининград (4012)72-03-81
Калуга (4842)92-23-67
Кемерово (3842)65-04-62
Киров (8332)68-02-04
Коломна (4966)23-41-49
Кострома (4942)77-07-48
Краснодар (861)203-40-90
Красноярск (391)204-63-61
Курск (4712)77-13-04
Курган (3522)50-90-47
Липецк (4742)52-20-81

Магнитогорск (3519)55-03-13
Москва (495)268-04-70
Мурманск (8152)59-64-93
Набережные Челны (8552)20-53-41
Нижний Новгород (831)429-08-12
Новокузнецк (3843)20-46-81
Ноябрьск (3496)41-32-12
Новосибирск (383)227-86-73
Омск (3812)21-46-40
Орел (4862)44-53-42
Оренбург (3532)37-68-04
Пенза (8412)22-31-16
Петрозаводск (8142)55-98-37
Псков (8112)59-10-37
Пермь (342)205-81-47

Ростов-на-Дону (863)308-18-15
Рязань (4912)46-61-64
Самара (846)206-03-16
Санкт-Петербург (812)309-46-40
Саратов (845)249-38-78
Севастополь (8692)22-31-93
Саранск (8342)22-96-24
Симферополь (3652)67-13-56
Смоленск (4812)29-41-54
Сочи (862)225-72-31
Ставрополь (8652)20-65-13
Сургут (3462)77-98-35
Сыктывкар (8212)25-95-17
Тамбов (4752)50-40-97
Тверь (4822)63-31-35

Тольятти (8482)63-91-07
Томск (3822)98-41-53
Тула (4872)33-79-87
Тюмень (3452)66-21-18
Ульяновск (8422)24-23-59
Улан-Удэ (3012)59-97-51
Уфа (347)229-48-12
Хабаровск (4212)92-98-04
Чебоксары (8352)28-53-07
Челябинск (351)202-03-61
Череповец (8202)49-02-64
Чита (3022)38-34-83
Якутск (4112)23-90-97
Ярославль (4852)69-52-93

Россия +7(495)268-04-70

Казахстан +(727)345-47-04

Беларусь +(375)257-127-884

Узбекистан +998(71)205-18-59

Киргизия +996(312)96-26-47

эл.почта: ezu@nt-rt.ru || сайт: <https://leuze.nt-rt.ru/>